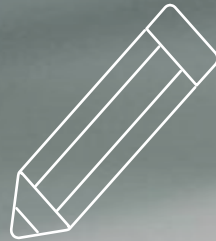




Kudumbashree

Changing the lives of urban street dwellers- A special Initiative



SCHEME OF SHELTER FOR URBAN HOMELESS-



- A component National Urban Livelihoods Mission being implemented through Urban Local Bodies
- **Kudumbashree** - The state Nodal Agency for Kerala
- Providing permanent all weather 24x7 shelter homes to
the most vulnerable – The Street dwellers

Who is urban street dweller?



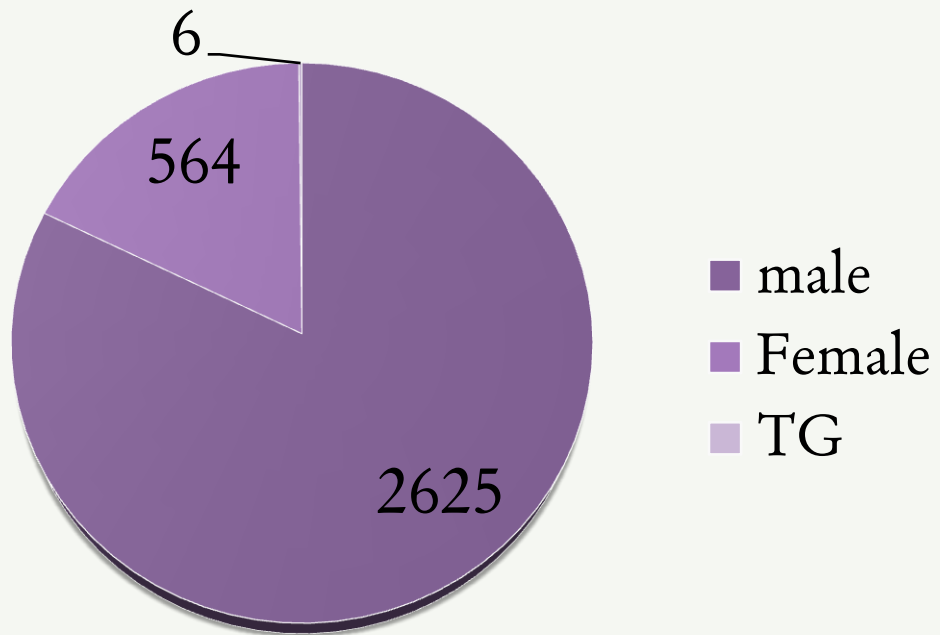
- Homeless People
- Do not have access to safe stay
- Find stay in streets, food path, pavements, under the bridges, in the premises of bus stand, railway stations, near the worship places etc.



Stratagies

- Identification
- Mobilisation
- Mapping of existing shelter homes
- Refurbishment of Existing Shelter Homes
- Construction of new Shelter homes
- Linking homeless to nearby shelter homes
- Social entitlements
- Social security scheme (security pensions , insurances etc)

Identification through survey



- Conducted night surveys in two seasons
- Identified 3195 urban homeless street dwellers

Resource Mapping

- **254 existing shelter homes** providing safe stay to **11,295 homeless**
- **152 shelter homes** have extra space /bed to accommodate more people

Responses

- Homeless people (412) who are linked to shelter homes have been provided with valid ID cards (317) and Aadhaar card.
- Shelter residents (298) have been linked to different social security schemes including security pension and insurance schemes

Shelter homes under NULM

- 25 new construction projects
- 17 refurbishment projects
- 20 shelter homes functional catering to the shelter needs of 912 individuals and 72 families
- 22 ongoing projects having a capacity of 1615 beds



A Change Over



72 Families provided with safe accommodation (family shelter).
Construction work being completed by Kudumbashree in just 10 months
period

Monitoring Systems in place

- **State level project sanctioning committee**
- **State level shelter monitoring committee**
- **Executive committee at ULB level**
- **Shelter monitoring committee at ward level**

Way Forward.....

- Establish adequate number of shelter homes on priority basis and mobilise homeless to the shelters
- Skilling shelter residents
- Livelihoods through wage employment and self employment
- Linking to PMAY (Affordable Housing in Partnership)
- Four inmates ready to shift to own houses – linking with PMAY/Skilling –Self Employment of NULM

Thank
you

